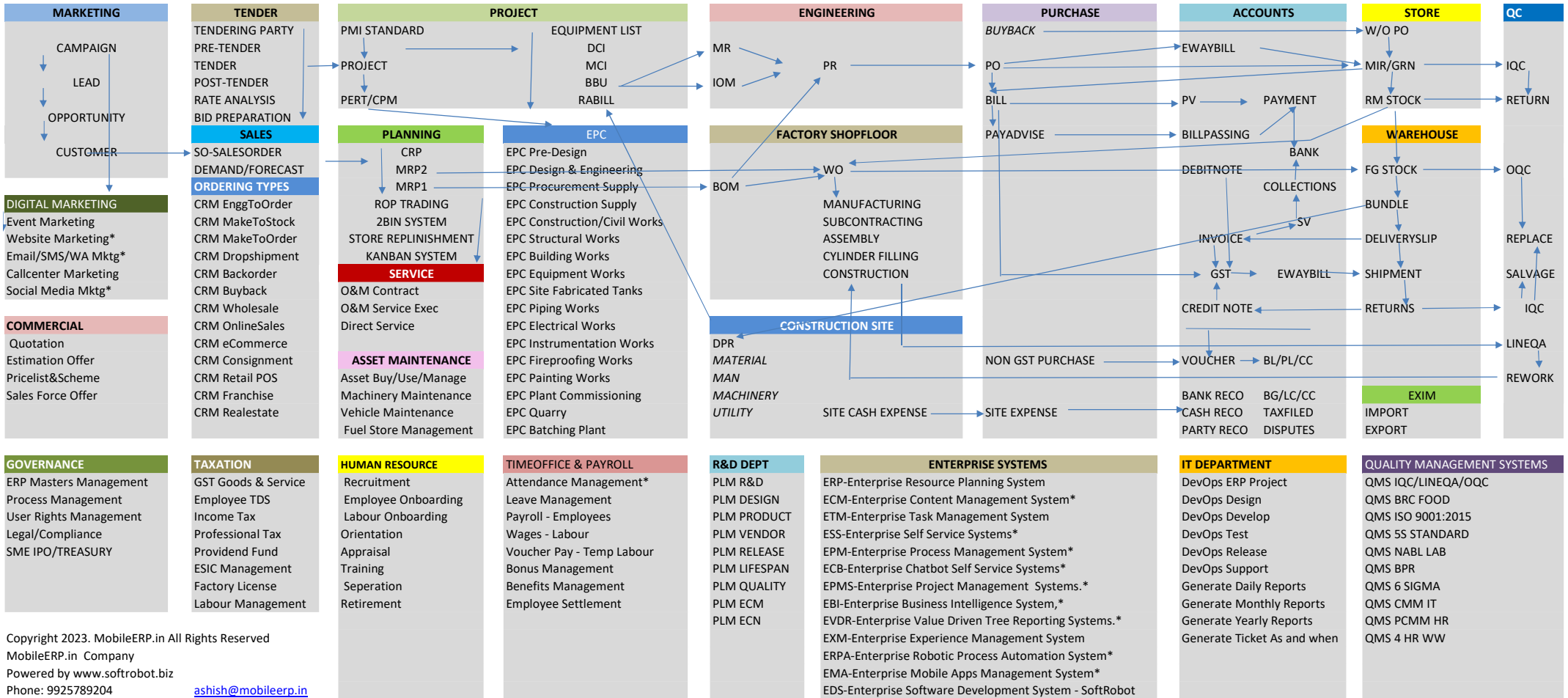


# MOBILEERP PROCESS AND MODULE FLOW DIAGRAMS



# Requirement Study Sheet

DEPARTMENT	USERS	DATAENTRY	PROCESS	REQ Y/N
<b>MARKETING</b>	<b>MARKETING</b>		<b>Marketing &gt; Order</b>	
Marketing	MARKETING	CAMPAIGN	Campaign>Lead	
Marketing	MARKETING	CONTACT	Lead>Opportunity	
Marketing	MARKETING	OPPORTUNITY	Opportunity>Deal	
Marketing	MARKETING	CUSTOMER	Deal>Customer>SO	
<b>DIGITAL MARKETING</b>	<b>SALESTEAM</b>		<b>Digital Marketing &gt; Order</b>	
DigitalMarketing	SALESTEAM	EVENTS	EVENT>SO	
DigitalMarketing	SALESTEAM	WEBSITE	WEBSITE>SEO>SO	
DigitalMarketing	SALESTEAM	EMAILCAMPAIGN	BULKEMAIL>SO	
DigitalMarketing	SALESTEAM	CALLCENTER	CALL >SO	
DigitalMarketing	SALESTEAM	DIGITALMARKETING	SM>SO	
<b>COMMERCIAL</b>	<b>COMMERCIAL MANAGER</b>		<b>Offer &gt; Order</b>	
Commercial	OFFER	CART	Cart>Dispatch	
Commercial	OFFER	INQUIRY	Inquiry>Quote>SO	
Commercial	OFFER	PRICELIST	Pricelist>Scheme>eCom	
Commercial	OFFER	SALESCALLS	Targets>Achievements	
<b>TENDERING</b>	<b>TENDER MANAGER</b>		<b>Tender &gt; Order/Project</b>	
Tender	TENDER	TENDER_INFO	Search > Bid/NoBid	
Tender	TENDER	TENDER	Bid to Won/Lost	
Tender	TENDER	TENDERCOMPARE	Won to EMD Recovery	
Tender	TENDER	LEADS	Tender > Bid> Project	
<b>PROJECT</b>	<b>PROJECT MANAGER</b>		<b>PROJECT &gt; BILL</b>	
Projects	PROJECT	EQUIPMENTLIST	Project >EQI-EquipmentIndex	
Projects	PROJECT	DCI	Project >DCI-DocumentIndex	
Projects	PROJECT	MCI	Project >MCI-MaterialIndex	
Projects	PROJECT	BBU	Project >BBU-BillingIndex	
Projects	PROJECT	PERTCPM	Project >BBU>PlanningIndex	
Projects	PROJECT	PROJECT	Project > BBU > RABILL>INVOICE	
Projects	PROJECT	PROJECT	Initiate>Plan>Execute>Monitor>Control	
<b>SERVICE</b>	<b>SERVICE MANAGER</b>		<b>SERVICE &gt; BILL</b>	
Service	SERVICE	SERVICECONTRACT	Contract>Quote>Invoice	
Service	SERVICE	TICKET	Call>TKT>Repair>Invoice	
Service	SERVICE	INVOICE	Service Delivery>Invoice	
<b>SALES</b>	<b>SALES MANAGER</b>		<b>ORDER &gt; BILL</b>	
Sales	SALES	CONTRACT	Mfg Contract Execution	
Sales	SALES	DEMAND	DEMAND > MRP > WO > Invoice	
Sales	SALES	SORDER	SO > MRP > WO > Invoice	
Sales	SALES	SORDER	SO > SHIPWO/PO > INVOICE> POD	
Sales	SALES	SORDER	SO > PO > STK > SI	
Sales	SALES	SORDER	SI > POD > PI	
Sales	SALES	INVOICE	INVOICE to Dealer>Partner SETTLEMENT	
Sales	SALES	INVOICE	PO from AMAZON>DELIVERY>SETTLEMENT	
Sales	SALES	RETAILORDER	E-COMMERCE>CART>PAYMENT>DELIVERY	
Sales	SALES	SORDER	MALL>SALES-RENT-COMMISSION-EXPENSE	
Sales	SALES	RETAILORDER	POS-POINT OF SALES > INVOICE	
Sales	SALES	FRANCHISE	FRANCHISE/FRANCHISOR SALES	

Sales	SALES	REALESTATE	INQUIRY to BAF-BOOKING ACCEPTANCE
<b>WAREHOUSE</b>	<b>WAREHOUSE MANAGER</b>		<b>DELIVERY&gt;SHIPMENT</b>
WAREHOUSE	WAREHOUSE	PROJECTDPR	BBU > IRN > DPR > BOM>MI>RABILL>Invoice
WAREHOUSE	WAREHOUSE	INVOICE	Invoice>SV>eInvoice>eWaybill
WAREHOUSE	LOGISTICS	DELIVERYSLIP	Shipment Flow
WAREHOUSE	FRONTOFFICE	COURIERORDER	Courier Flow
WAREHOUSE	SECURITY	GATEPASS	Security Check
<b>PLANNING</b>	<b>PLANNING MANAGER</b>		<b>PLANNING&gt;PROCUREMENT</b>
Planning	PLANNING	MR	MR > MR
Planning	PLANNING	MR	MR > RFQ > Q > C > PR
Planning	PLANNING	IOM	IOM > RFQ> PR
Planning	PLANNING	PR	PR > PO/WO/SCO/SO/BT/MT
<b>PURCHASE</b>	<b>PURCHASE MANAGER</b>		<b>PURCHASE&gt;STORE&gt;STOCK</b>
Purchase	PURCHASE	PORDER	PO>PI > MIR>STK
Purchase	PURCHASE	PORDER	WO>PI > MIR>STK
Purchase	PURCHASE	PORDER	SCO>PI > MIR>STK
Purchase	PURCHASE	PORDER	AMC/CMC>PI>SERVICE INWARD
Purchase	PURCHASE	PORDER	PO>DPR>PI
Purchase	PURCHASE	PORDER	PO>PI>ASSET
<b>STORES</b>	<b>INVENTORY MANAGER</b>		<b>STORE&gt;FACTORY&gt;WAREHOUSE</b>
Stores/Site	STORES	PINVOICE	eWayBill > PO> PI > MIR>IQC>GRN
Stores/Site	STORES	PINVOICE	PI>DEBIT NOTE>SUPPLIER
Stores/Site	STORES	PINVOICE	WO/DPR>MATERIAL ISSUE
Stores/Site	STORES	PINVOICE	PI>CREDITNOTE>CUSTOMER
Stores/Site	STORES	SALVAGE	FG Salvage> Multiple RM Produced
Stores/Site	STORES	BUNDLE	Bundle=Multiple Material packed in bundle
Stores/Site	STORES	SCRAP	SCAP > VALUE POSTED TO ACCOUNTS/STOCK
Stores/Site	STORES	REPAIR	REPAIR > IDENTIFIED AS REFURBISHED ITEM
WAREHOUSE	STORES	INVOICE	ST > WH to RETAIL STORE = SI>PI
Stores/Site	STORES	INVOICE	BT > STOCKCARD>SITE1 to SITE2 = SI>PI
Stores/Site	STORES	INVOICE	BT > STOCKCARD>SITE1 to SITE2 = SI>PI
Stores/Site	STORES	STOCKCARD	STKCARD>VALUATION>Stock Voucher
Stores/Site	STORES	STOCKCARD	Physical Inventory vs System Inventory
<b>MANUFACTURING</b>	<b>PRODUCTION MANAGER</b>		<b>PRODUCTION &gt; PRODUCT</b>
Manufacturing	SHOPFLOOR	MFGORDER	WO > MI > MIR>STK>WH
Manufacturing	SHOPFLOOR	MFGORDER	SO from subcon>WO>MI>MIR>STK>WH
Manufacturing	SHOPFLOOR	MFGORDER	SO to JS>JC>MI>MIR>STK
Manufacturing	SHOPFLOOR	MFGORDER	SO>ECR>FILLWO>FCI>SI
Manufacturing	SHOPFLOOR	MFGORDER	COTTON>YARN>CLOTH>STITCH>GARMENT
Manufacturing	SHOPFLOOR	MFGORDER	RM+Ingrediants>Process>Products w/shelflife
Manufacturing	SHOPFLOOR	MFGORDER	RM>MixDesign>Process>Product in Batch
Manufacturing	SHOPFLOOR	MFGORDER	Wafer>Package>Testing>Pkg>Dispatch
<b>CONSTRUCTION</b>	<b>CONSTRUCTION MANAGER/CONTRACTOR</b>		<b>PROJECT&gt;BBU&gt;DPR&gt;RABILL</b>
Design	ENGINEERING	DCI	DCI > Code 2 > MR
Engineering	ENGINEERING	REVISION	BBU > Dwg
Procurement/Supply	PROCUREMENT	PROCUREMENT	BBU > Supply
Construction Supply	PROCUREMENT	BULKSUPPLY	BBU > Bulk Supply
Construction/Civil	CONSTRUCTION	CO	BBU > Civil
Structural	CONSTRUCTION	STRUC	BBU > Struct
Building	CONSTRUCTION	BLDG	BBU > Bldg
Shop Fabricated Equipments	CONSTRUCTION	EQUIP	BBU > Equip
Site Fabricated Tanks	MANUFACTURING	MO	BBU > S.F.Tanks
Piping	CONSTRUCTION	PIPE	BBU > Piping
Electrical	CONSTRUCTION	ELEC	BBU > Electrical

Instrumentation	CONSTRUCTION	INST	BBU > Instru
Fire Proofing	CONSTRUCTION	FIRE	BBU >Fproofing
Painting	CONSTRUCTION	PAINT	BBU > Painting
Commissioning	COMMISSIONING	CM	BBU > Handover
Mining/Quarry	QUARRY	CRUSHPRODUCTIONRATIO	STONE>CRUSH>SAND
Construction Plant	PLANT	BATCHING	CEMENT+SAND+WATER>CONCRETE
<b>MAINTENANCE</b>	<b>MAINTENANCE MANAGER</b>		<b>ASSET &gt; USE &gt; MAINTAIN &gt; DISPOSE</b>
Maintenance	MAINTENANCE	ASSET	Procure>Use>Retire/Sales/Scrap
Maintenance	MAINTENANCE	PMSHEET	LOGBOOK
Maintenance	MAINTENANCE	LOGBOOK	LOGBOOK
Maintenance	MAINTENANCE	FUEL	LOGBOOK
<b>BILLPASSING</b>	<b>AP ACCOUNTANT</b>		<b>ORDER &gt; BILL&gt;BILLPASSING&gt;PV&gt;PAYMENT</b>
Accounts	BILLPASSING	PINVOICE	eWayBill > PI > PV
Accounts	BILLPASSING	TRAVELREQUEST	ESS>Budget > Expense>EV
Accounts	BILLPASSING	PAYMENTS	PV>TDS>Chq Printing>Supplier
<b>INVOICING</b>	<b>AR ACCOUNTANT</b>		<b>Invoice&gt;SV&gt;eInvoice&gt;eWaybill&gt;COLLECTIONS</b>
Accounts	INVOICE	INVOICE	Invoice>SV>eInvoice>eWaybill
Accounts	INVOICE	RECEIPTS	Collections>Deposits>BankReco
<b>FOREIGNTRADE</b>	<b>EXIM MANAGER</b>		<b>EXPORT OR IMPORT</b>
Accounts	EXIM	IMPORTS	PO>Imports>MIR>PI>PV
Accounts	EXIM	EXPORTS	IRN>Invoice>Exports>SV
<b>TAXATION</b>	<b>TAXATION MANAGER</b>		<b>GST / TDS / PROF TAX / IT / ESIC / PF / FACTORY LIC</b>
Accounts	TAXATION	TAXFILED	GSTR1>GSTR2B>GSTR3B>PAY
Accounts	TAXATION	DECLARATION	ESS>Declaration>TDS>Tax Payments
Accounts	TAXATION	INCOMETAX	Stock Posting> Asset Valuation > BL/PL > IT
Accounts	TAXATION	PROFTAX	Professional Tax
Accounts	TAXATION	PF	Providend Fund
Accounts	TAXATION	PROFTAX	ESCI Medical Management
Accounts	TAXATION	LICENSES	License renewals
<b>ACCOUNTS</b>	<b>ACCOUNTS MANAGER</b>		<b>VOUCER&gt;TB&gt;BL/PL</b>
Accounts	ACCOUNTS	VOUCHER	COA>Voucher > BL/PL > Audit> ReturnsS Filing
Accounts	ACCOUNTS	VOUCHER	CCT>Projectwise P&L / Employee+MC Costing
Accounts	ACCOUNTS	VOUCHER	Bank+Customer+Supplier+TDS+GST Reconciliations
<b>FINANCE</b>	<b>FINANCE MANAGER</b>		<b>BANKS&gt;LOANS&gt;CREDIT&gt;INVESTMENTS</b>
Finance	BANKING	LOANBOOK	BANK+BG+LC+EMD+LOANS>RECONCILE
Finance	BANKING	SMEIPO	IPO PROCESS
<b>P&amp;A Dept.</b>	<b>CORPORATE MANAGER</b>		<b>ENTERPRISE CONTROL</b>
P&A Dept.	GRC	MASTERS	Customer>Supplier>Employee>Item etc.
P&A Dept.	GRC	USERS	Process>Targets>Assigned Users>Performance
P&A Dept.	GRC	USERS	Employee>User>Rights>WorkPerformance
P&A Dept.	GRC	TAXFILED	Compliance>Success/Failures>Notices>Cases
P&A Dept.	GRC	CASEHISTORY	Cases>Advocates>OnBoard>Status>Judgement
<b>HR Dept.</b>	<b>HR MANAGER</b>		<b>HIRE TO RETIRE</b>
H.R.	HR	JOBS	Vacancy to Employee
H.R.	HR	EMPLOUEE	Employee>PF Reg>ESIC Reg
H.R.	HR	LABOUR	Labour>PF Reg>ESIC Reg
H.R.	HR	EMPLOYEE	Joining to Workallotment
H.R.	HR	PARFORM	Apraisal to Training
H.R.	HR	TRAININGREQ	Training to SkillMatrix
H.R.	HR	RESIGNATION	Resign to Settlement
H.R.	HR	RETIREMENT	Retirement to Settlement
<b>TO Dept.</b>	<b>TO MANAGER</b>		<b>Attendance&gt;Leave&gt;Payroll&gt;Bonus</b>
TimeOffice	HR	ATNDCARD	Attendance Card > Musteroll
TimeOffice	HR	LEAVEAPP	LeaveAPP>Leave Sanction>Leave Records>Sanctions

TimeOffice	HR	MONTHLYTRAN	Employee Musteroll>Payroll
TimeOffice	HR	LABOUR	Labour Sheet>Skilled/Unskilled - Man/Women>Wages
TimeOffice	HR	TEMLABOUR	TempLabour > Voucher > Pay
TimeOffice	HR	BONUS	BONUS Calculations and Payments
<b>QMS Dept.</b>	<b>QMS MANAGER</b>		<b>QMS STANDARD&gt;AUDIT&gt;CERTIFICATION</b>
QA-QC	QMS	QC	IQC>LINEQA>OQC
QA-QC	QMS	BRC	BRC Food Standard
QA-QC	QMS	AUDITREPORT	ISO QMS Standard
QA-QC	QMS	FIVES	Sort>Order>Shine>Std>Sustain
QA-QC	QMS	NABLPROJECT	NABL Laboratory Standard
QA-QC	QMS	BPRPROJECT	Business Process Re-engineering
QA-QC	QMS	SIGMAPROJECT	DMAIC 6 Standard
QA-QC	QMS	CMMPROJECTS	Capability Maturity Model
QA-QC	QMS	PCMM	People Capability Maturity Model
QA-QC	QMS	FOURHRWWPROJECT	4 Hour Work Week DEAL
<b>R&amp;D Dept.</b>	<b>PLM MANAGER</b>		<b>DESIGN&gt;PRODUCT&gt;VENDOR&gt;RELEASE&gt;LIFESPAN&gt;QUALITY</b>
R&D	ENGINEERING	ITEM	R&D
R&D	ENGINEERING	DRAWING	DRAWING
R&D	ENGINEERING	NEWPRODUCT	PRODUCT
R&D	ENGINEERING	SUPPLIERSTOCK	VENDOR
R&D	ENGINEERING	RELEASE	RELEASE
R&D	ENGINEERING	LIFESPAN	LIFESPAN
R&D	ENGINEERING	COMPLAIN	QUALITY
R&D	ENGINEERING	ECN	ECM
R&D	ENGINEERING	ECN	ECN
<b>IT Dept.</b>	<b>IT MANAGER</b>		<b>DESIGN&gt;DEVELOP&gt;TEST&gt;RELEASE&gt;SUPPORT</b>
Computer	HELPDESK	ERP	REQ>Software
Computer	HELPDESK	DESIGN	DESIGN
Computer	HELPDESK	DEVELOP	DEVELOP
Computer	HELPDESK	TESTPROCESS	TEST
Computer	HELPDESK	RELEASE	RELEASE
Computer	HELPDESK	ISSUE	TKT>Solution
Computer	HELPDESK	TKT	DAILY
Computer	HELPDESK	TKT	MONTHLY
Computer	HELPDESK	CALENDER	YEARLY
Computer	HELPDESK	TICKET	TICKET